

# SMART FLOORING SYSTEM

PROJECTS & REFERENCES







**PAVE**<sup>AND</sup>**GO**

# **SMART FLOORING SYSTEM**

**PROJECTS & REFERENCES**

---

**INDOOR projects**

p. 4

---

**OUTDOOR projects**

p. 18



Exklusives und innovatives Klicksystem für Bodenbeläge im Innenbereich: einfache und schnelle Verlegung, große Einsatzvielfalt und erstklassige Leistungsmerkmale. Die Bodenelemente von Pave and Go bestehen aus 10 bzw. 20 mm starken Feinsteinzeugplatten der Emilgroup, die mit einem Trägerelement aus Polyurethan verbunden werden, das umlaufend mit einem Nut-Feder-Verriegelungssystem gesichert ist. Dieses System ermöglicht eine schnelle und unkomplizierte Verlegung, ohne dass Zementestrich oder Kleber erforderlich sind.

Un esclusivo e innovativo sistema ad aggancio per realizzare pavimentazioni interne con la massima facilità, velocità, versatilità e la garanzia di prestazioni tecniche di livello eccezionale. Con Pave and Go, le lastre in gres porcellanato Emilgroup a spessore 10 e 20 mm vengono integrate in un supporto poliuretano dotato di agganci perimetrali che permette un'installazione estremamente semplice, rapida e senza l'utilizzo di massetti in cemento o altri collanti.

An exclusive, innovative interlocking joint system for extremely easy, quick, versatile installation of indoor floorings with guaranteed outstanding technical performances. With Pave and Go, Emilgroup porcelain stoneware tiles 10 and 20 mm thick are integrated in a polyurethane backing with interlocking joints around the edge, allowing very fast, trouble-free installation without the use of cement screeds or other adhesives.

## NUT-FEDER-VERRIEGELUNGSSYSTEM

Male-female interlocking joint system  
Sistema ad incastro maschio-femmina

## TRÄGERPLATTE AUS POLYURETHAN

Polyurethane backing  
Supporto in poliuretano

## FEINSTEINZEUG 60x60 cm . 23<sup>5</sup>/<sub>8</sub>"x 23<sup>5</sup>/<sub>8</sub>" - STÄRKE 10 mm UND 20 mm

Porcelain Stoneware of 60x60 cm . 23<sup>5</sup>/<sub>8</sub>"x 23<sup>5</sup>/<sub>8</sub>" - Thickness 10 and 20 mm  
Gres Porcellanato 60x60 cm . 23<sup>5</sup>/<sub>8</sub>"x 23<sup>5</sup>/<sub>8</sub>" - Spessore 10 e 20 mm

## UMLAUFENDE FUGE 2 mm (4 mm ZWISCHEN DEN VERRIEGELTEN FLIESEN)

Perimeter joint of 2 mm (4 mm with tiles laid side by side)  
Fuga perimetrale 2 mm (4 mm con piastrelle unite)

## MODULSTÄRKE 18 mm UND/ODER 28 mm

Module thickness 18 mm and/or 28 mm  
Spessore Modulo 18 mm e/o 28 mm

# SMART FLOORING SYSTEM

A REVOLUTION IN INDOOR PAVING

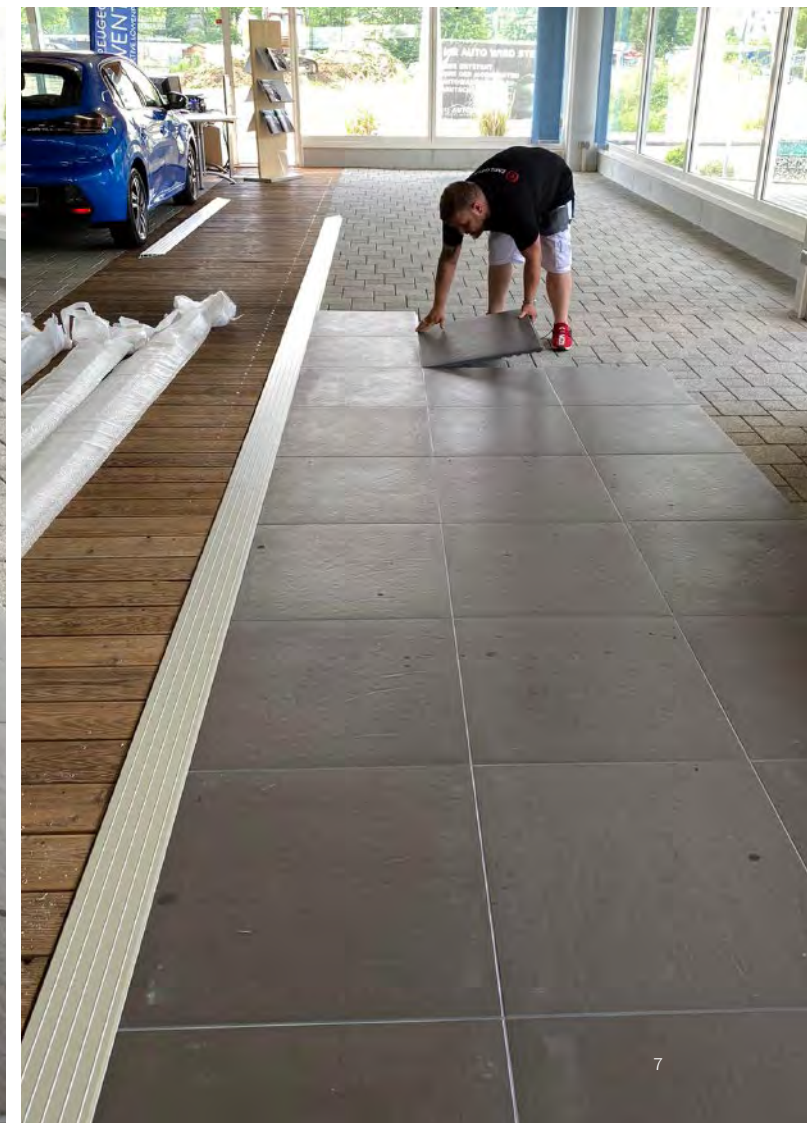
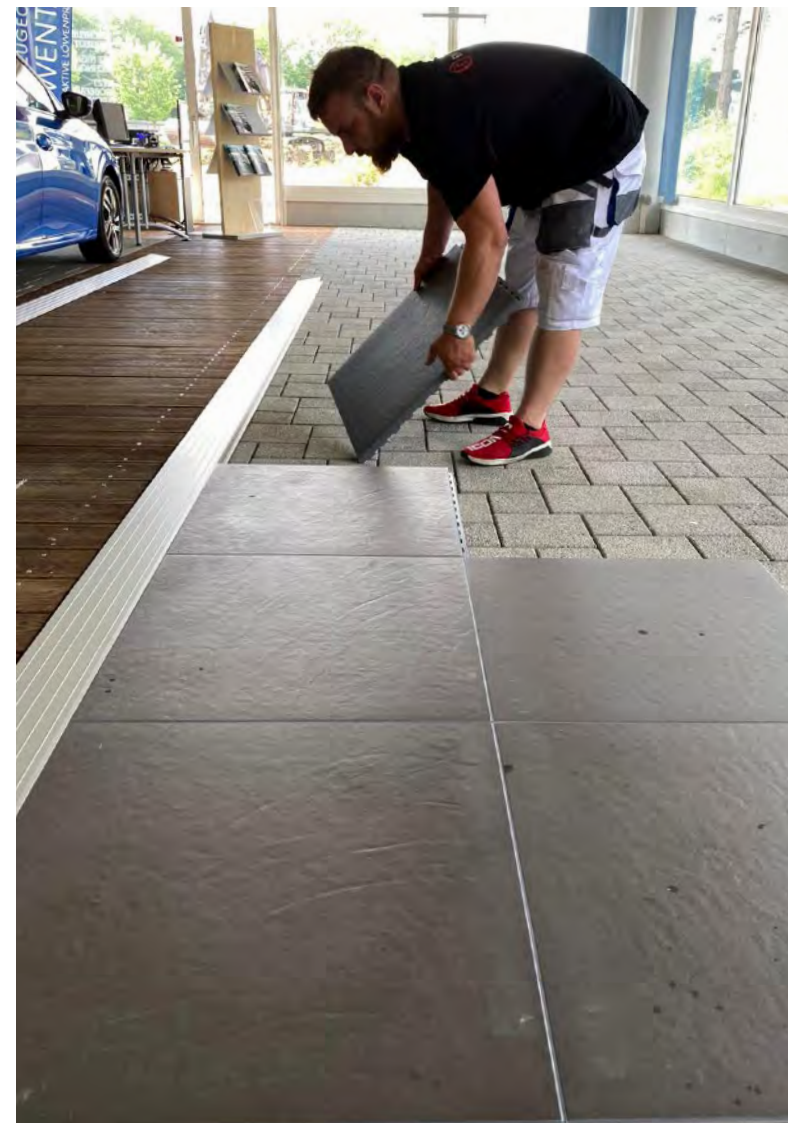
Pave and Go Indoor 18 mm wird für private und öffentliche Innenbereiche empfohlen, in denen keine hohen Einzel- oder Verkehrslasten anfallen. Pave and Go Indoor 28 mm hingegen besitzt eine Tragfähigkeit bis zu 2.000 kg und ist daher für stark frequentierte öffentliche und gewerbliche Bereiche geeignet.

Pave and Go Indoor 18 mm is recommended for residential and public interiors without permanent or transient heavy loads, while Pave and Go Indoor 28 mm is recommended for intensively used public and commercial locations, since it withstands a weight up to 2000 kg.

Si consiglia di utilizzare Pave and Go Indoor 18 mm per interni residenziali e pubblici dove non transitano o stazionano carichi pesanti, mentre si consiglia di utilizzare Pave and Go Indoor 28 mm per pubblici e commerciali ad alto traffico perchè supporta un peso fino a 2000kg.

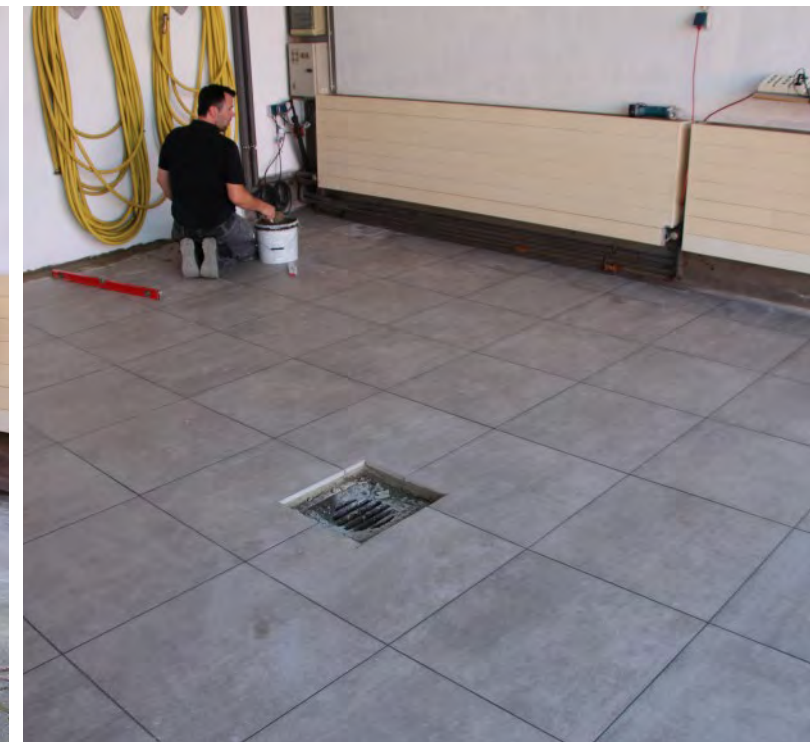


<b>PROJECT</b>	<b>Peugeot Autohändler</b>
<b>SYSTEM</b>	Pave and Go Indoor 28 mm thickness - Corporate Identity Tile
<b>LOCATION, DATE</b>	Oberhausen, Germany, 2020
<b>INSTALLATION TIME</b>	3 people - 8 hours
<b>INFO</b>	110 sqm



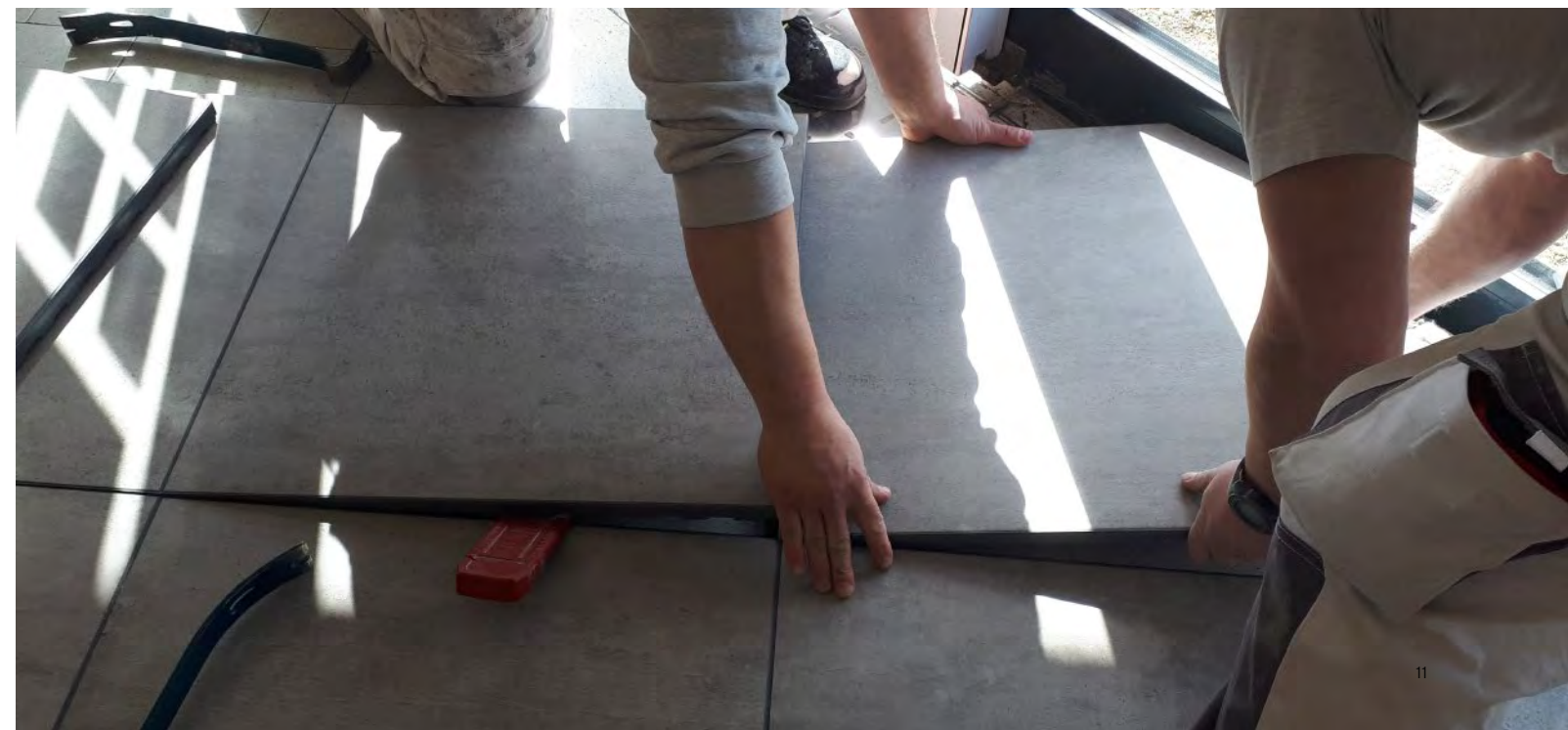
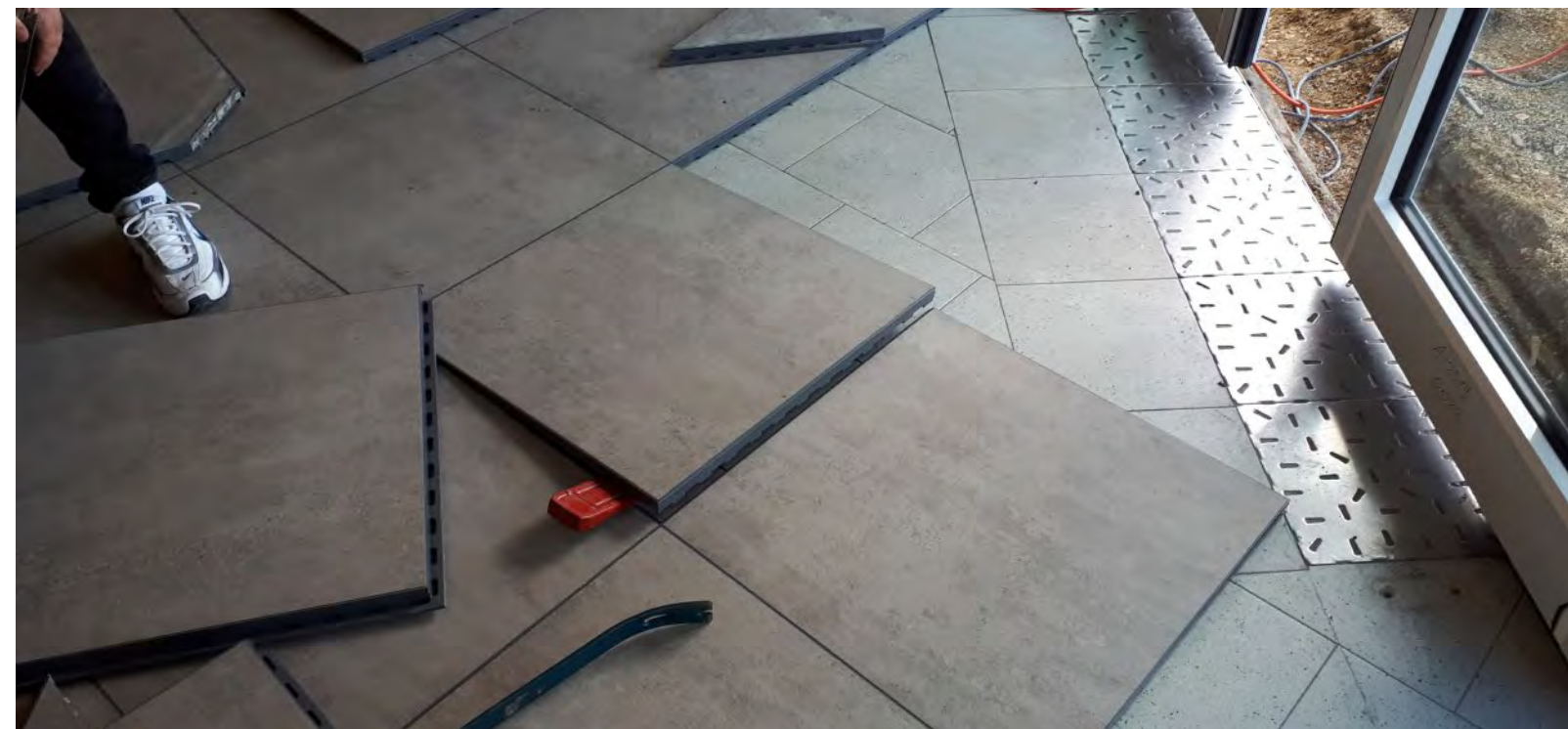


<b>PROJECT</b>	<b>Rettungswagen Garage</b>
<b>SYSTEM</b>	Pave and Go Indoor 28 mm thickness - On Square Cemento
<b>LOCATION, DATE</b>	Mönchengladbach, Germany, 2020
<b>INSTALLATION TIME</b>	3 people - 8 hours
<b>INFO</b>	45 sqm



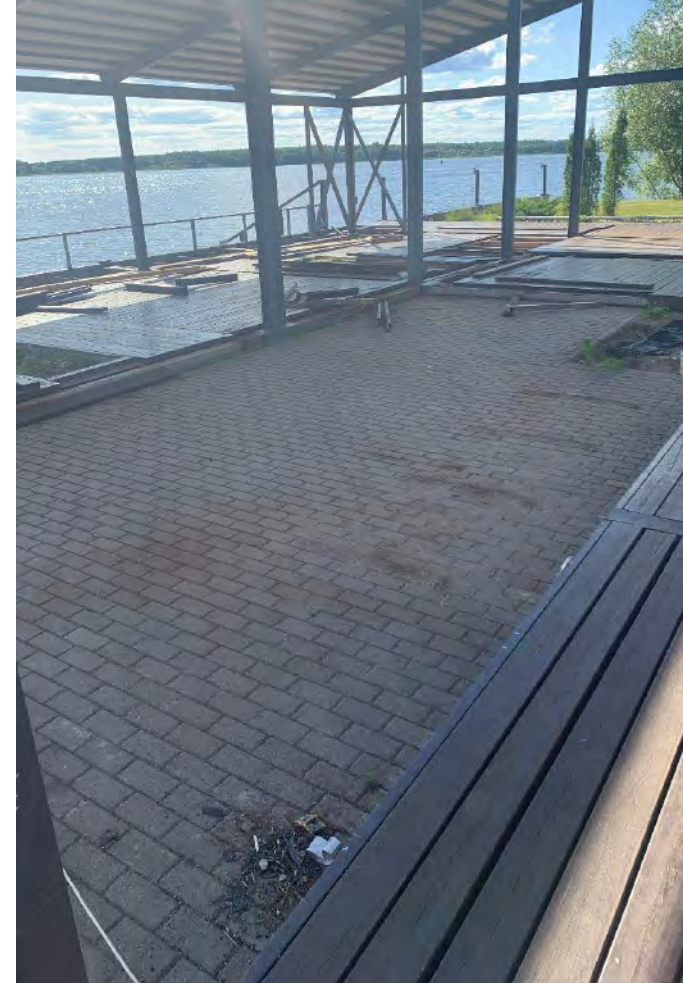


<b>PROJECT</b>	<b>Hoffmann Getränkemarkt</b>
<b>SYSTEM</b>	Pave and Go Indoor 28 mm thickness - On Square Cemento
<b>LOCATION, DATE</b>	Bad Liebenwerda, Germany, 2019
<b>INSTALLATION TIME</b>	4 people - 8 hours
<b>INFO</b>	500 sqm



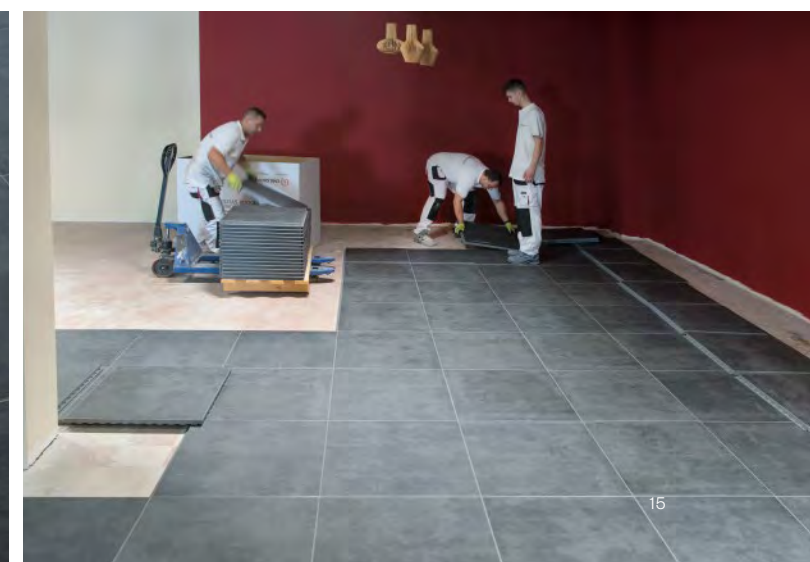


<b>PROJECT</b>	<b>Konakovo River Club</b>
<b>SYSTEM</b>	Pave and Go Indoor 28 mm thickness - Ardesia Grey
<b>LOCATION, DATE</b>	Konakovo, Tver Oblast, Russia, 2020
<b>INSTALLATION TIME</b>	2 people - 3 hours
<b>INFO</b>	50 sqm





<b>PROJECT</b>	<b>Denn's Biomark</b>
<b>SYSTEM</b>	Pave and Go Indoor 28 mm thickness - Statale 9 Nero Carbone Wet
<b>LOCATION, DATE</b>	Bochum, Germany, 2020
<b>INSTALLATION TIME</b>	5 people - 2 days
<b>INFO</b>	800 sqm



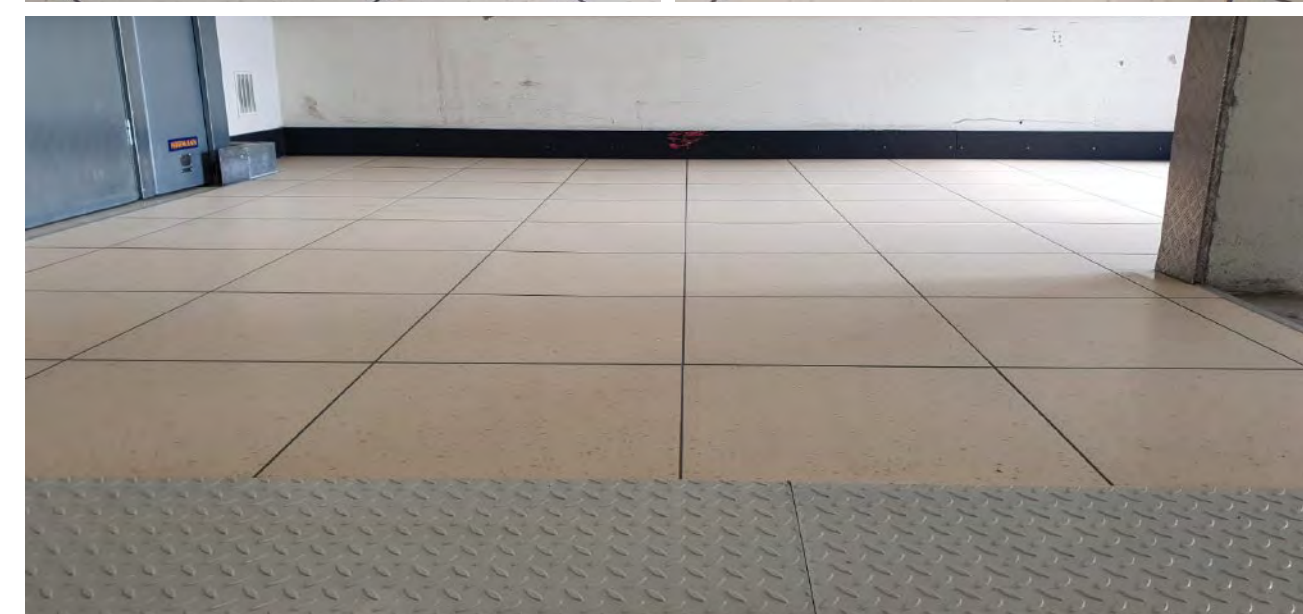
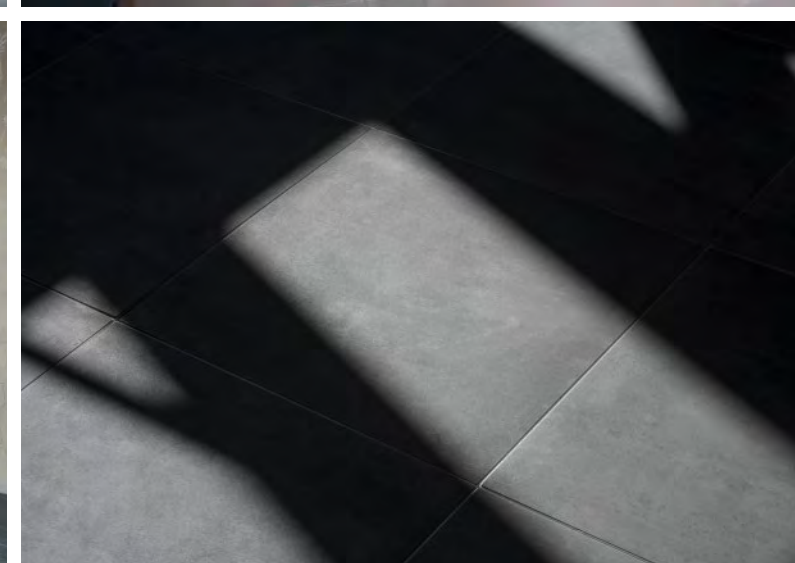
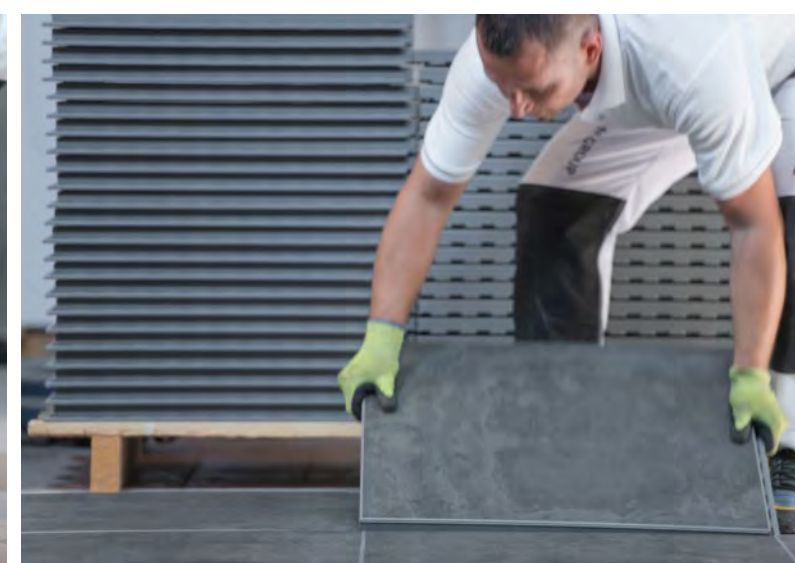




# PAVE AND GO

SMART FLOORING SYSTEM / INDOOR PAVING PROJECTS

<b>PROJECT</b>	<b>Lidl Testfläche</b>
<b>SYSTEM</b>	Pave and Go Indoor 28 mm thickness
<b>LOCATION, DATE</b>	Frankfurt, 2020
<b>INSTALLATION TIME</b>	2 people - 3 hours
<b>INFO</b>	50 sqm





# SMART FLOORING SYSTEM

A REVOLUTION IN OUTDOOR PAVING

## NUT-FEDER-VERRIEGELUNGSSYSTEM

Male-female interlocking joint system  
Sistema ad incastro maschio-femmina

## TRÄGERPLATTE AUS POLYURETHAN

Polyurethane backing  
Supporto in poliuretano

## FEINSTEINZEUG 60x60 cm . 23<sup>5</sup>/<sub>8</sub>"x 23<sup>5</sup>/<sub>8</sub>" - STÄRKE 20 mm

Porcelain Stoneware of 60x60 cm . 23<sup>5</sup>/<sub>8</sub>"x 23<sup>5</sup>/<sub>8</sub>" - Thickness 20 mm  
Gres Porcellanato 60x60 cm . 23<sup>5</sup>/<sub>8</sub>"x 23<sup>5</sup>/<sub>8</sub>" - Spessore 20 mm

## UMLAUFENDE FUGE 2 mm (4 mm ZWISCHEN DEN VERRIEGELTEN FLIESEN)

Perimeter joint of 2 mm (4 mm with tiles laid side by side)  
Fuga perimetrale 2 mm (4 mm con piastrelle unite)

## MODULSTÄRKE 28 mm

Module thickness 28 mm  
Spessore Modulo 28 mm

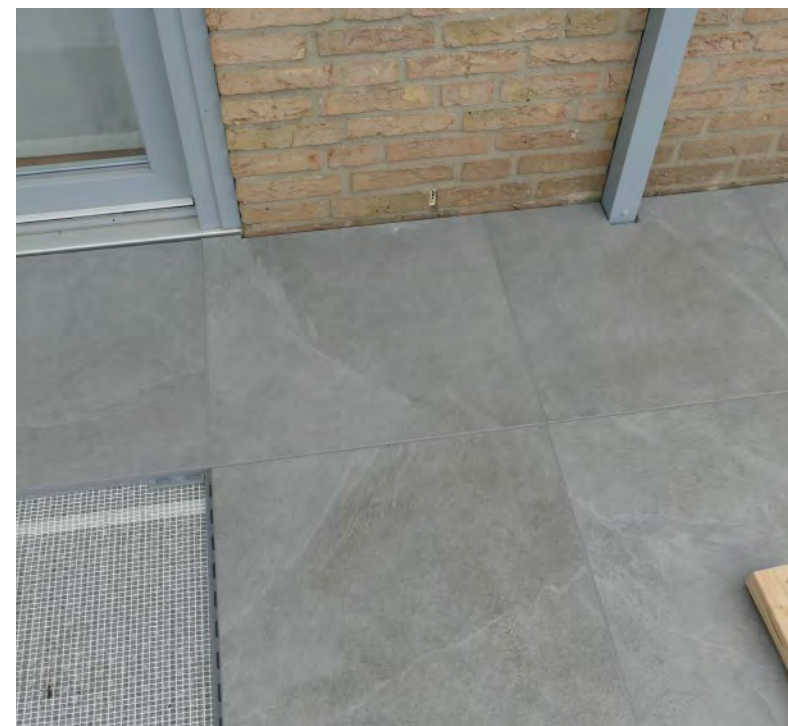
Exklusives und innovatives Klicksystem für Bodenbeläge im Außenbereich: einfache und schnelle Verlegung, große Einsatzvielfalt und erstklassige Leistungsmerkmale. Die Bodenelemente von Pave and Go bestehen aus 20 mm starken Feinsteinzeugplatten der Emilgroup, die mit einem Trägerelement aus Polyurethan verbunden werden, das umlaufend mit einem Nut-Feder-Verriegelungssystem gesichert ist. Dieses System ermöglicht eine schnelle und unkomplizierte Verlegung, ohne dass Zementestrich oder Kleber erforderlich sind.

An exclusive, innovative interlocking joint system for extremely easy, quick, versatile installation of outdoor pavings with guaranteed outstanding technical performances. With Pave and Go, Emilgroup porcelain stoneware tiles 20 mm thick are integrated in a polyurethane backing with interlocking joints around the edge, allowing very fast, trouble-free installation without the use of cement screeds or other adhesives.

Un esclusivo e innovativo sistema ad aggancio per realizzare pavimentazioni esterne con la massima facilità, velocità, versatilità e la garanzia di prestazioni tecniche di livello eccezionale. Con Pave and Go, le lastre in gres porcellanato Emilgroup a spessore 20 mm vengono integrate in un supporto poliuretano dotato di agganci perimetrali che permette un'installazione estremamente semplice, rapida e senza l'utilizzo di massetti in cemento o altri collanti.

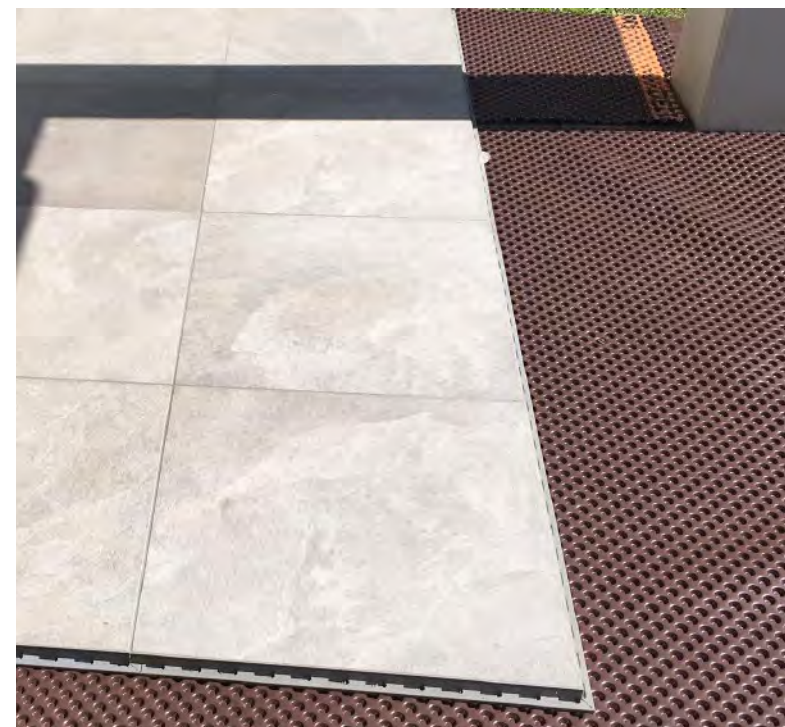
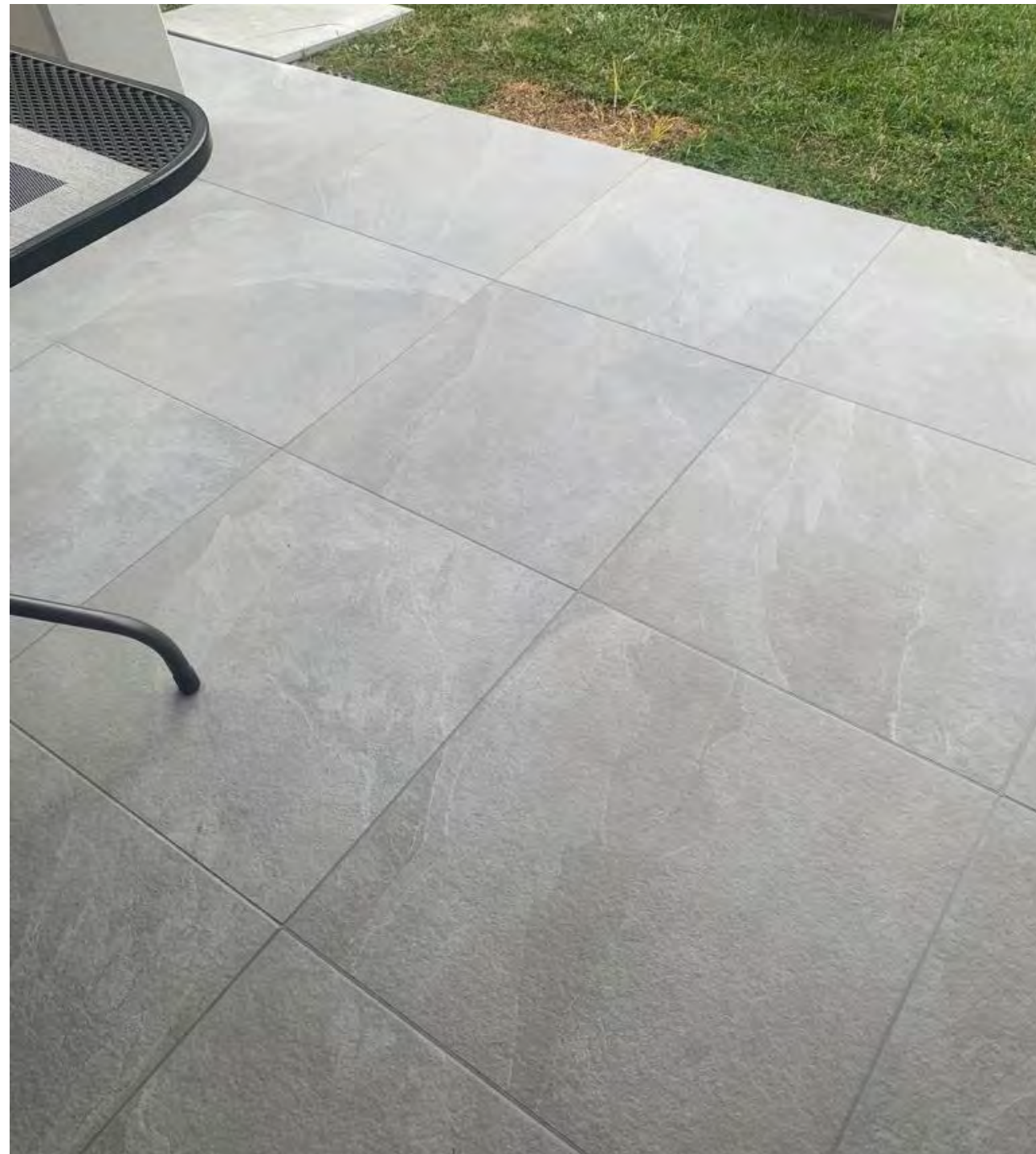


<b>PROJECT</b>	<b>Private Terrace</b>
<b>SYSTEM</b>	Pave and Go Outdoor 28 mm thickness - Ardesia Grey
<b>LOCATION, DATE</b>	Braunschweig, Germany, 2020
<b>INSTALLATION TIME</b>	2 person - 1,5 days (incl. sub-surface preparation with sand and drainage mat and installation of water channel, cutting)
<b>INFO</b>	30 sqm





<b>PROJECT</b>	<b>Outdoor Twin House 1</b>
<b>SYSTEM</b>	Pave and Go Outdoor 28 mm thickness - Ardesia Grey
<b>LOCATION, DATE</b>	Switzerland, 2020
<b>INSTALLATION TIME</b>	1 person - 4 hours
<b>INFO</b>	40 sqm





<b>PROJECT</b>	<b>Outdoor Twin House 2</b>
<b>SYSTEM</b>	Pave and Go Outdoor 28 mm thickness - Ardesia Grey
<b>LOCATION, DATE</b>	Switzerland, 2020
<b>INSTALLATION TIME</b>	1 person - 4 hours
<b>INFO</b>	32 sqm



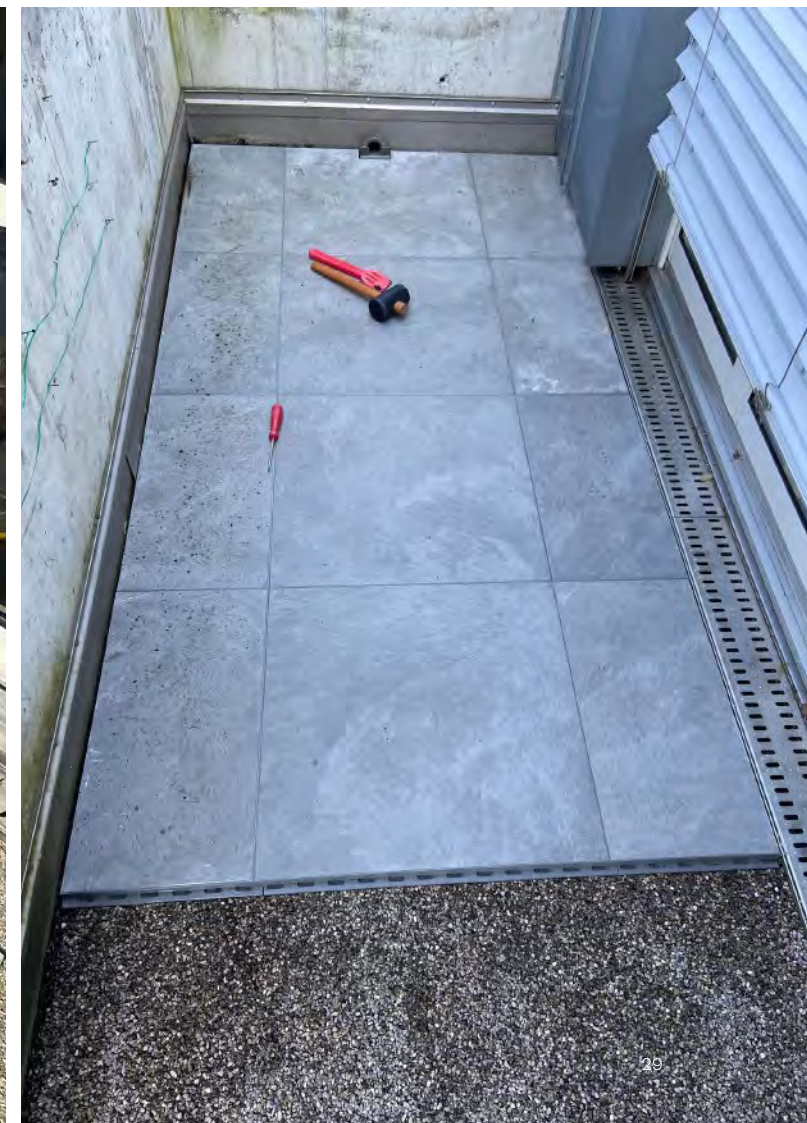
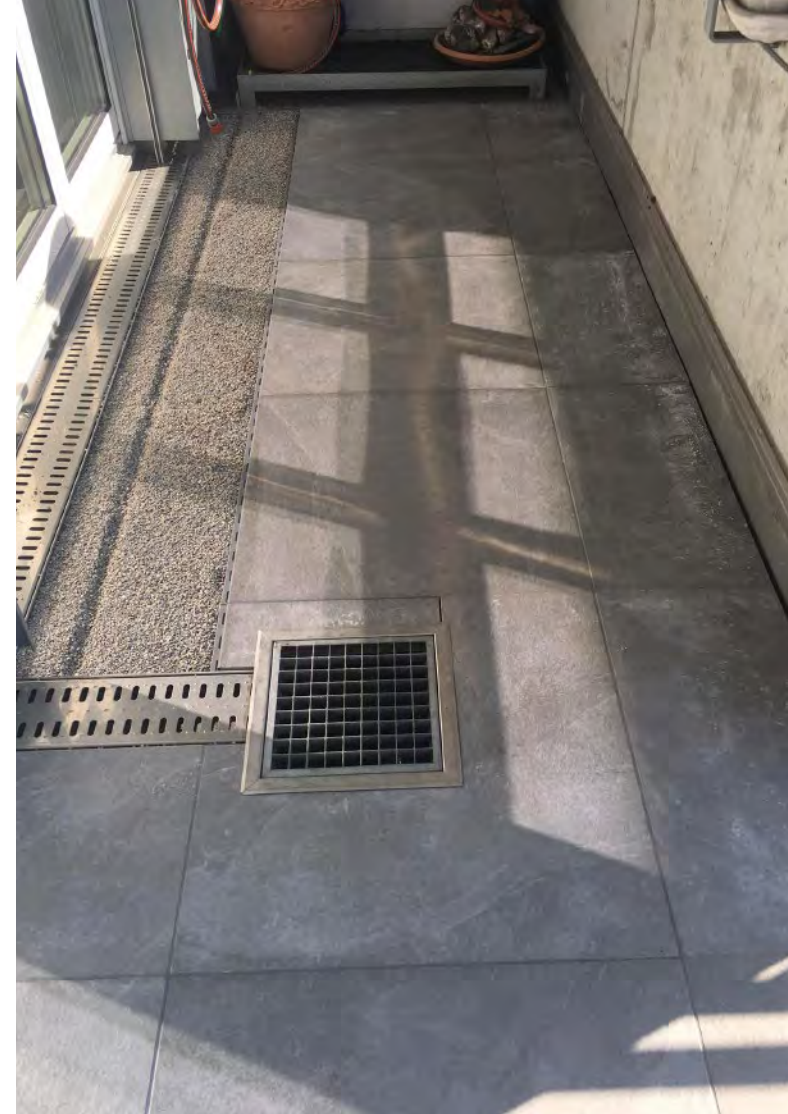


<b>PROJECT</b>	<b>Old Patio Renovation</b>
<b>SYSTEM</b>	Pave and Go Outdoor 28 mm thickness - Kingstone Gold
<b>LOCATION, DATE</b>	South Tyrol, Italy, 2020
<b>INSTALLATION TIME</b>	1 person - 3 hours
<b>INFO</b>	50 sqm





<b>PROJECT</b>	<b>Old Terrace Renovation</b>
<b>SYSTEM</b>	Pave and Go Outdoor 28 mm thickness - Portland Grey
<b>LOCATION, DATE</b>	Switzerland, 2020
<b>INSTALLATION TIME</b>	2 people - 1 day
<b>INFO</b>	50 sqm



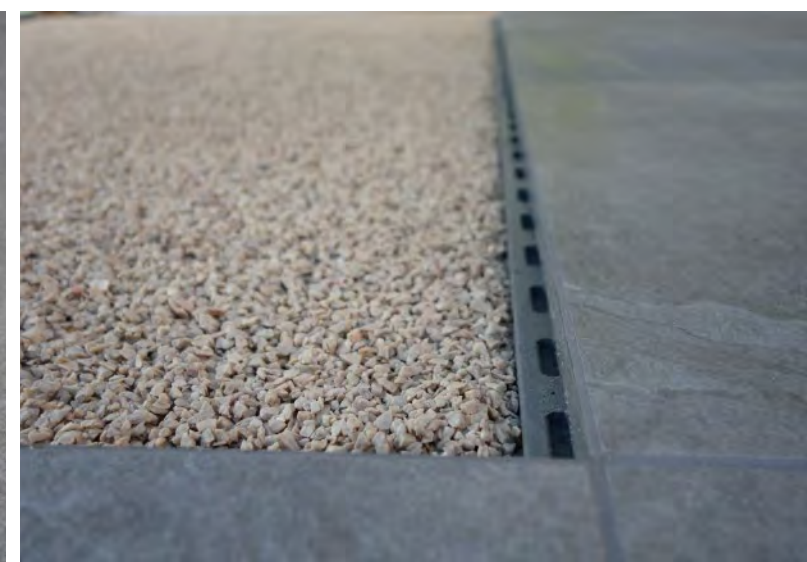
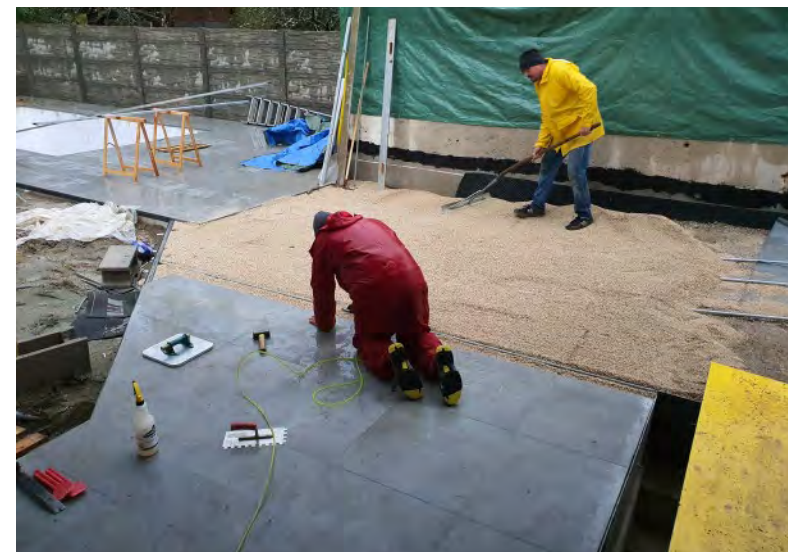


<b>PROJECT</b>	<b>Private Garden</b>
<b>SYSTEM</b>	Pave and Go Outdoor 28 mm thickness - Ardesia Grey
<b>LOCATION, DATE</b>	Switzerland, 2020
<b>INSTALLATION TIME</b>	2 people - 2 days
<b>INFO</b>	30 sqm





<b>PROJECT</b>	<b>Privathaus</b>
<b>SYSTEM</b>	Pave and Go Outdoor 28 mm thickness - Ardesia Grey
<b>LOCATION, DATE</b>	Klagenfurt, Austria, 2020
<b>INSTALLATION TIME</b>	3 people - 2 days (5°C with rain)
<b>INFO</b>	160 sqm





<b>PROJECT</b>	<b>Privathaus</b>
<b>SYSTEM</b>	Pave and Go Outdoor 28 mm thickness - Ardesia Grey
<b>LOCATION, DATE</b>	South Tyrol, Italy, 2020
<b>INSTALLATION TIME</b>	2 people - 6 days
<b>INFO</b>	200 sqm





PAVE AND GO

[emilgroup.de/paveandgo](https://emilgroup.de/paveandgo)