

PAVE AND **GO**

SMART FLOORING SYSTEM

A REVOLUTION IN INDOOR PAVING



ENGLISH





PAVE^{AND}**GO**

SMART FLOORING SYSTEM

A REVOLUTION IN INDOOR PAVING

INDEX

- 04/ **THE SYSTEM**
- 10/ **STRONG POINTS**
- 24/ **BENEFITS**
- 26/ **INTENDED USES**
- 28/ **INSTALLATION**
- 30/ **DESIGNS**
- 32/ **THE TURNKEY PROJECT FOR YOUR NEEDS**
- 40/ **TRIMS**
- 43/ **TECHNICAL CHARACTERISTICS AND WARRANTY**
- 46/ **CARE AND CLEANING CONDITIONS**

SMART FLOORING SYSTEM / A REVOLUTION IN INDOOR PAVING

INNOVATIVE INDOOR FLOORING SYSTEM

Indoor installation made easy and immediate! A real indoor revolution.

Pave and Go is the innovative system of tiles with vertical interlocking joint, with perimeter joint of 2 mm, quick and easy to install with no chemical products required and ready for use at once.



SMART FLOORING SYSTEM / A REVOLUTION IN INDOOR PAVING

An exclusive, innovative interlocking joint system for extremely easy, quick, versatile installation of indoor floorings with guaranteed outstanding technical performances. With Pave and Go, Emilgroup porcelain stoneware tiles 9,5 and 20 mm thick are integrated in a polyurethane backing with interlocking joints around the edge, allowing very fast, trouble-free installation without the use of cement screeds or other adhesives.

MALE-FEMALE INTERLOCKING JOINT SYSTEM

POLYURETHANE BACKING

**PORCELAIN STONEWARE OF 60X60 CM - 23^{5/8}" X 23^{5/8}"
THICKNESS 9,5 AND 20 MM**

**PERIMETER JOINT OF 2 MM
(4 MM WITH TILES LAID SIDE BY SIDE)**

MODULE THICKNESS 18 MM AND/OR 28 MM

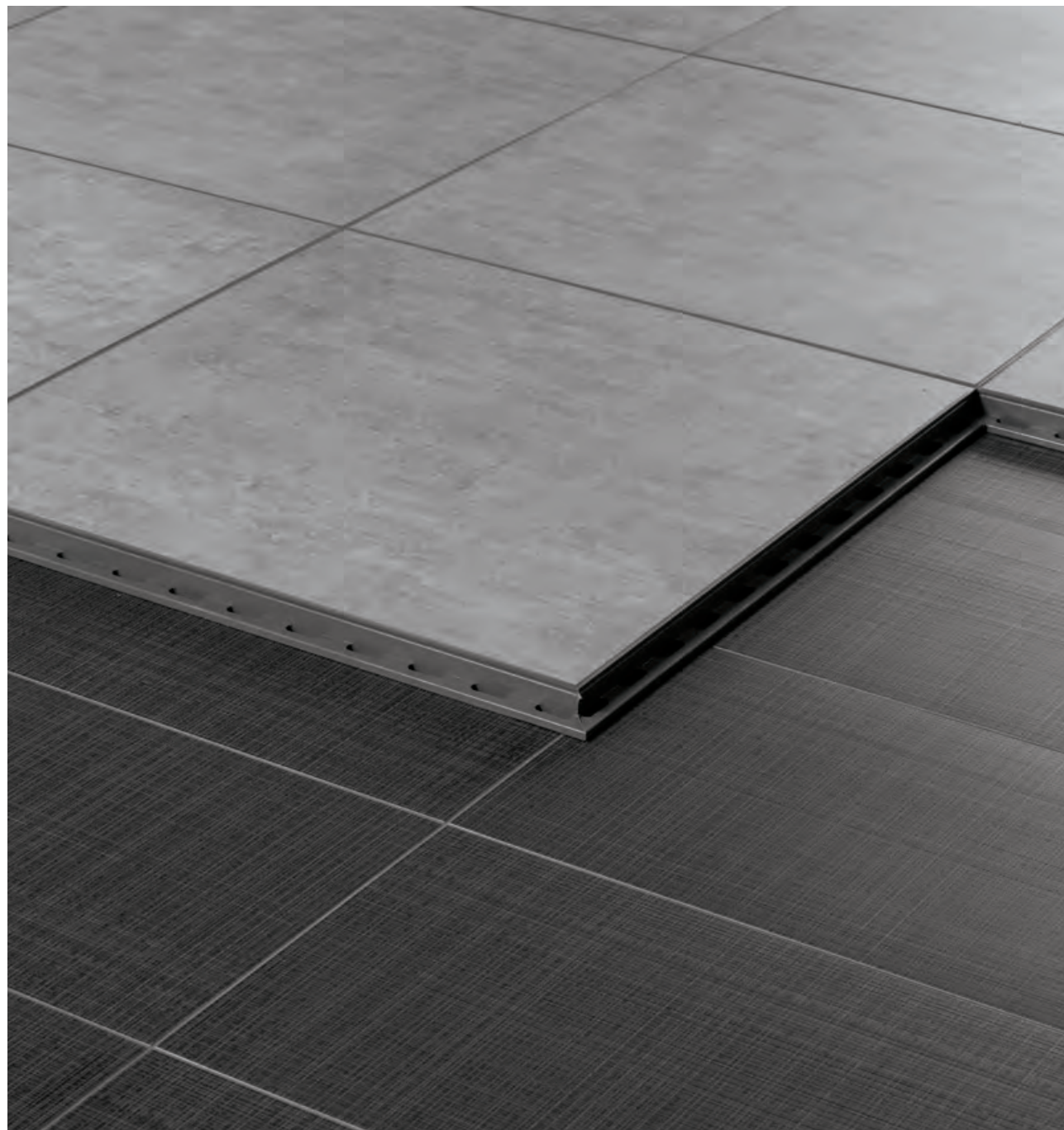
Pave and Go Indoor 18 mm is recommended for residential and public interiors without permanent or transient heavy loads, while Pave and Go Indoor 28 mm is recommended for intensively used public and commercial locations, since it withstands a weight up to 2000 kg.



Pave&Go 18mm
Trend Concrete Brown 60x60

INSTALLATION TIME? 5 TIMES LESS THAN WITH OTHER SYSTEMS!

With the Pave and Go one-click interlocking joint installation system, specifically developed for indoor ceramic flooring, tiles can be installed quickly and easily on screeds or on top of existing floorings. The tiles are just aligned and clicked together to create a paving ready for use at once.

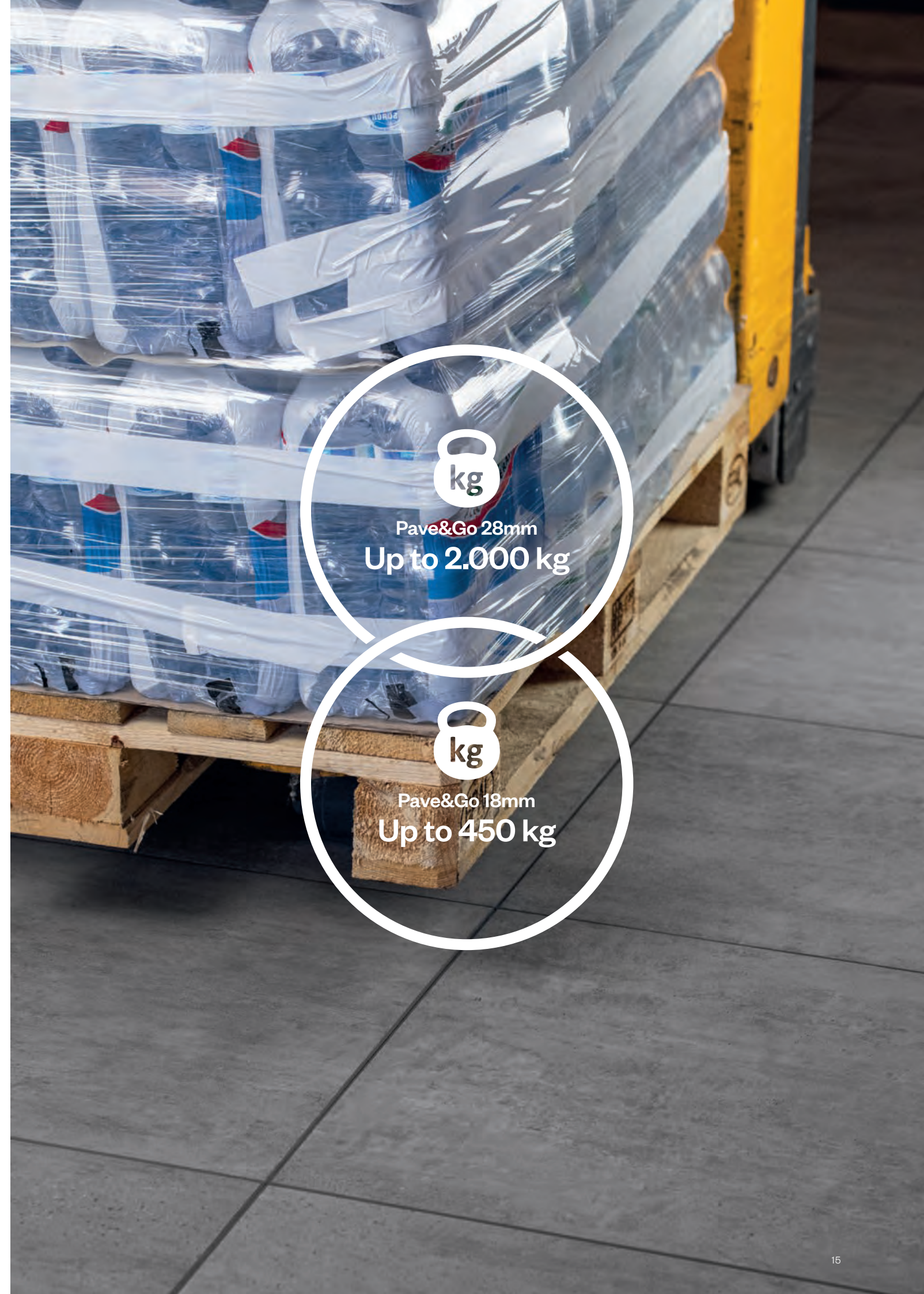




Pave&Go 28mm
Be Square Concrete 60x60

CLEAN? NO GLUE! NO GROUT! READY FOR USE? AT ONCE!

All it takes to install the Pave and Go system are a few standard tools, with no need for mortars, glues, screeds or other chemical products. This means there are no waiting times, or specific cleaning procedures, before your customers can start using the installed surfaces, in an office, restaurant or supermarket, for example. Installation can be carried out while the premises are in use, since no closures or stoppages for the works are required. Pave and Go 28 mm is also vehicle-resistant with load capacity up to 2000 kg.



kg
Pave&Go 28mm
Up to 2.000 kg

kg
Pave&Go 18mm
Up to 450 kg

No need to stop
work for installation.



IS IT EASY TO CLEAN? ABSOLUTELY! INCREDIBLE!

Your customers will be delighted with the result: the paving, with its integrated joints, will form a single, continuous surface.

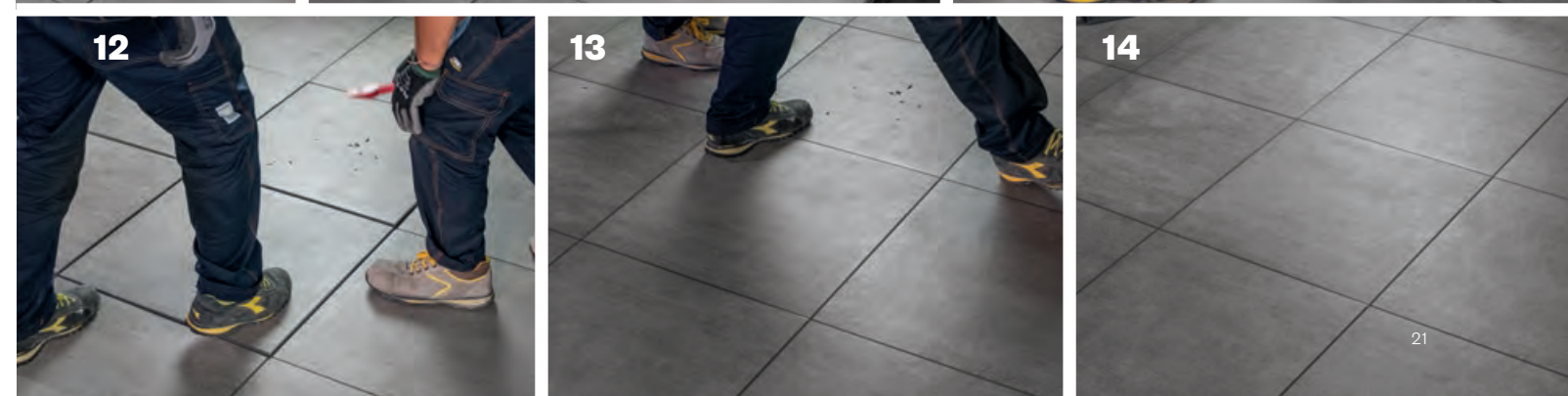
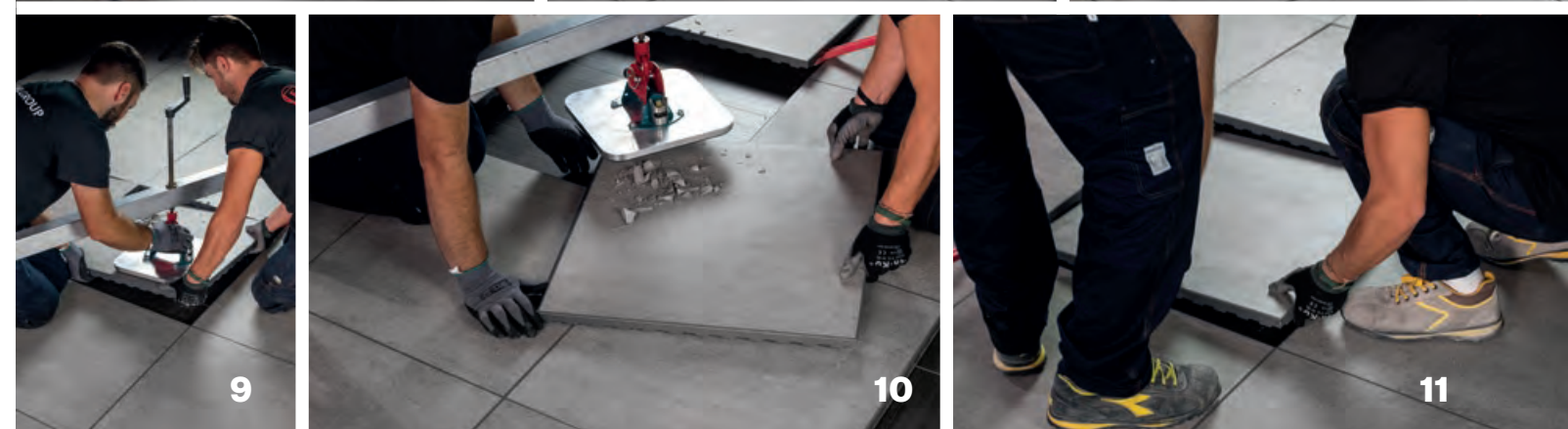
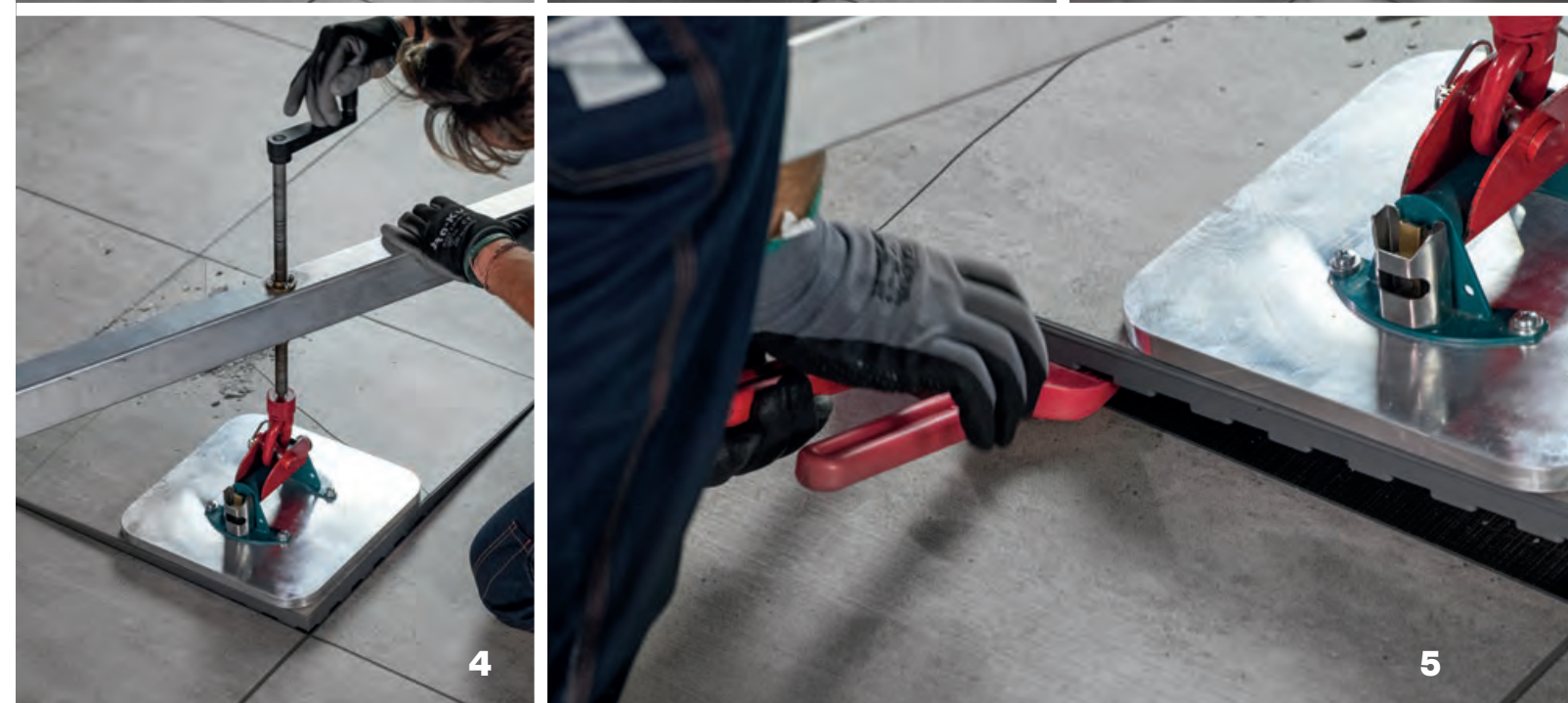
Thanks to the attractive colours and strength of the ceramic tiles, the structure will retain its beauty over time.

Taking care of an indoor flooring has also never been so easy! The surfaces are resistant to dirt and can easily be cleaned with ordinary tile cleaners.



AND IF I WANT TO CHANGE SOME ELEMENTS? VERY SIMPLE!

Pave and Go elements are very easy to replace if necessary. Want to change the pattern? Broken or damaged element? You can remove single elements or whole groups - it's no problem with the removal tool. Replacement can be carried out while the premises are in use, since no closures or stoppages for the works are required.





Pave&Go 28mm
Lombarda Grigio 60x60

BENEFITS



IMMEDIATE CONNECTION

Very quick installation times, up to 5 times faster than other systems, thanks to the innovative one-click interlocking joint system.



CAN BE WALKED OVER AT ONCE

The system can be walked over immediately after installation, since there is no need to wait for cement screeds or adhesives to dry.



SIMPLE, LOW-COST INSTALLATION

Extremely low installation costs thanks to a convenient, user-friendly male-female interlocking joint system.



CLEAN

The paving is installed without producing dirt or debris and no cement screeds or adhesives are required. This means less risk of dirtying the paving, implying time-consuming cleaning after installation.



DIRT REPELLENT

Free from even minimal porosity, Emilgroup tiles will never be attacked by moulds or other dirt-forming agents.



ANTI-SLIP RESISTANCE

Emilgroup tiles are manufactured with friction coefficients suitable for the intended applications: R9/R10 Indoor and R11 – C (A + B + C) if ordered for specific projects.



CONVENIENT AND WASHABLE

The tiles are quick and easy to wash with any type of detergent or equipment.



RESISTANT TO WATER

Emilgroup tiles have water absorption of less than 0.5%. This means liquids do not penetrate into the surface or around the edges of the material.



REUSABLE

Adhesive-free installation means modules can be reused, even several times.



REPLACEABLE

Modules are easy to replace in the event of repairs or modifications.



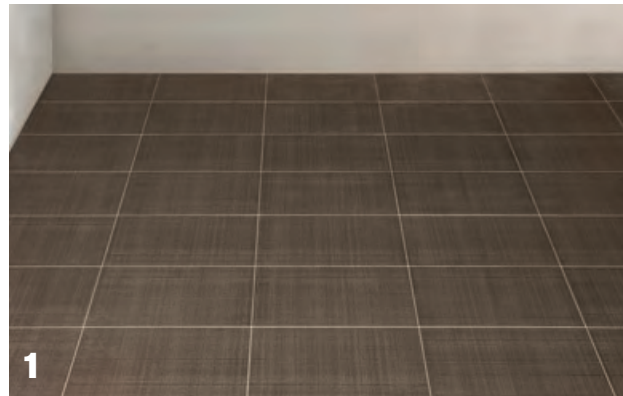
WIDE CHOICE OF LOOKS

The entire Emilgroup colour and material effect assortment in the 60x60 cm 10 and 20 mm sizes can be used on request.

INTENDED USES



INSTALLATION



1 Check that the installation screed or existing flooring is clean and flat.



2 Install the first element, placing it perpendicular with the adjacent walls.



3 Continue installing, interlocking all elements on the right side, until the space is full.



4



5 When the first row is complete, start again from the beginning, always ensuring that the elements are perpendicular.



6



7 When done, cut elements to size around the edges if necessary.



8 Elements can be cut with a tile cutter or angle-grinder.



9 Cutting of the PUR using a jigsaw with laminate blade.



10 Fill any gaps between the elements and the wall with silicone.



11



12

OUR DESIGNS

Pave and Go offers a rich selection of patterns and styles from the Emilgroup collections in the 60x60 cm size with thickness of 10 and 20 mm.

THE TURNKEY PROJECT FOR YOUR NEEDS

PAVE GO
SMART FLOORING
INDOOR SYSTEM



TOP QUALITY CERAMIC PRODUCT

Emilgroup guarantees the supply of an innovative system including the outstanding technical performance and immaculate appearance of porcelain stoneware.



QUALIFIED INSTALLATION TEAM

The Emilgroup team provides skilled, specialist staff for installation in line with the project's requirements.



PRE AND POST-INSTALLATION SERVICE

Emilgroup provides seamless assistance throughout all installation phases and for all technical requirements on the construction site.



PAVE GO
CONTACT US

PAVE GO
PROJECTS



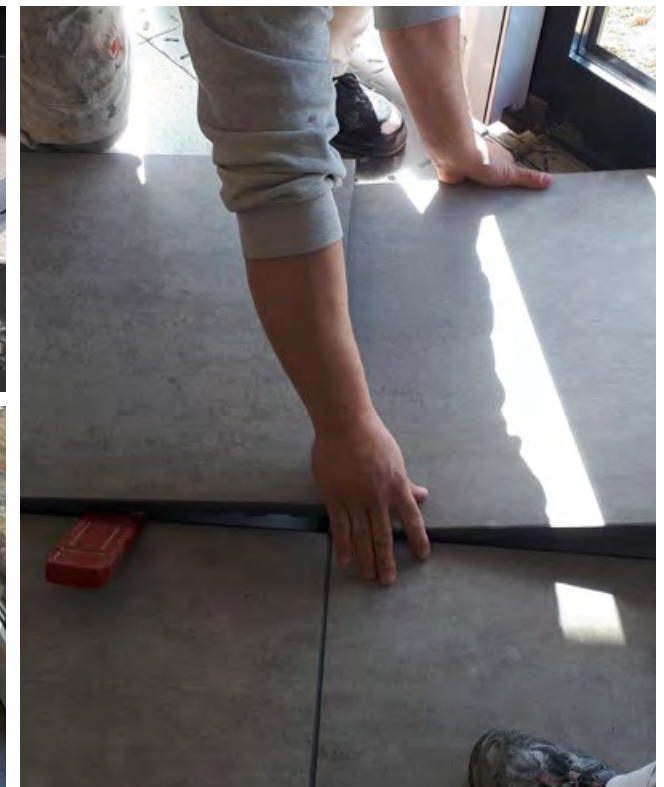
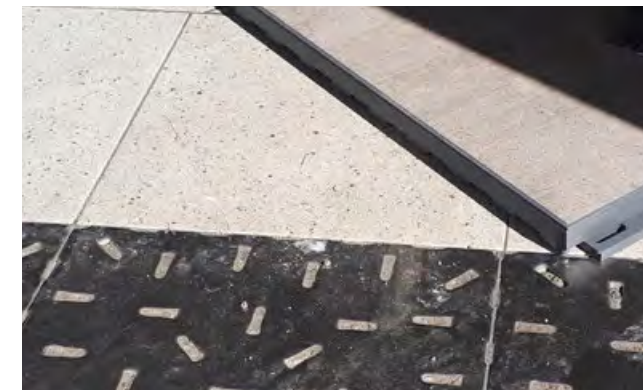
PROJECT	Marktkauf Barntруп
SYSTEM	Pave and Go Indoor 28 mm thickness - On Square Collection
LOCATION, DATE	Barntруп, Germany, 2022
INSTALLATION TIME	8 people - 5 days
INFO	3100 sqm



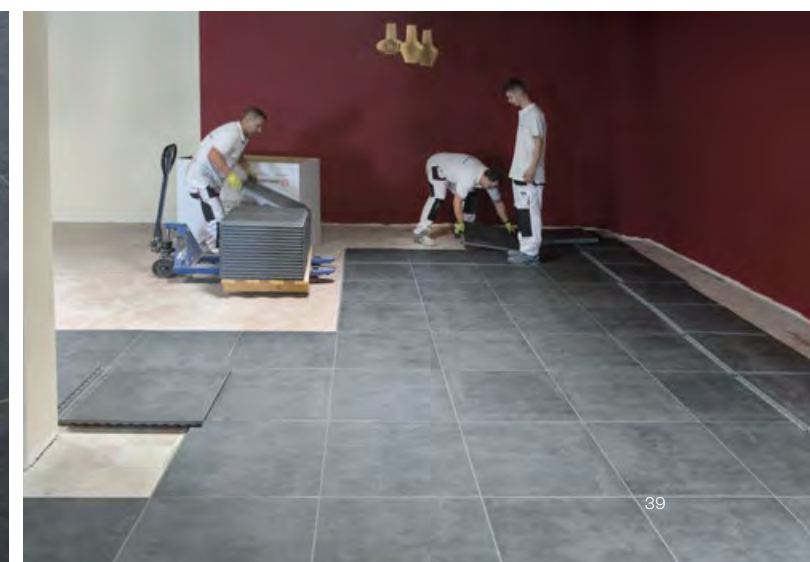
PROJECT	Jumbo Lebensmitteleinzelhandel Niederlande
SYSTEM	Pave and Go Indoor 28 mm thickness - On Square Cemento
LOCATION, DATE	Netherlands, 2022
INSTALLATION TIME	5 people - 6 days
INFO	2500 sqm



PROJECT	Hoffmann Getränkemarkt
SYSTEM	Pave and Go Indoor 28 mm thickness - On Square Cemento
LOCATION, DATE	Bad Liebenwerda, Germany, 2019
INSTALLATION TIME	4 people - 8 hours
INFO	500 sqm



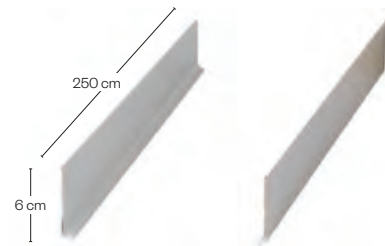
PROJECT	Denn's Biomark
SYSTEM	Pave and Go Indoor 28 mm thickness - Statale 9 Nero Carbone Wet
LOCATION, DATE	Bochum, Germany, 2020
INSTALLATION TIME	5 people - 2 days
INFO	800 sqm



TRIMS 18MM

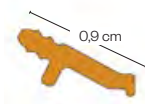
WHITE ALUMINIUM SKIRTING

10056247
6 x 250 cm - 2^{3/8"} x 98^{7/16"}



SKIRTING SEALING EDGE

10056253
0,9 x 250 cm - 3/8" x 98^{7/16"}



SKIRTING LEFT END TILE

10055912
H 6 cm - 2^{3/8"}



SKIRTING 90° OUTSIDE CORNER

10055910
H 6 cm - 2^{3/8"}



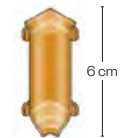
SKIRTING RIGHT END TILE

10055913
H 6 cm - 2^{3/8"}



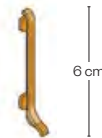
SKIRTING 90° INSIDE CORNER

10055911
H 6 cm - 2^{3/8"}



SKIRTING CONNECTION

10055914
H 6 cm - 2^{3/8"}



RAMP RENU EBU BRUSHED STEEL

10056254
1,75 x 3,35 x 250 cm - 1^{1/16"} x 1^{5/16"} x 98^{7/16"}



PROFILE SCHIENE AE ANODISED ALUMINUM

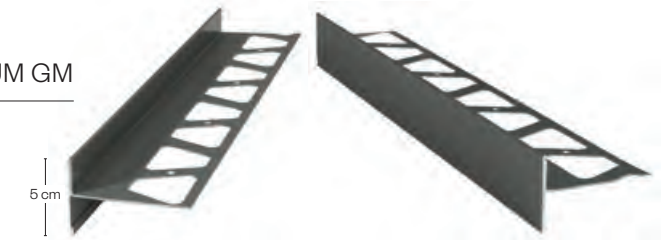
10056256
1,75 x 250 cm - 1^{1/16"} x 98^{7/16"}



TRIMS 18MM

PROFILE BARA RT COLOURED ALUMINIUM GM

10056259
5 x 250 cm - 1^{5/16"} x 98^{7/16"}



PROFILE OUTSIDE CORNER BARA RT

10055924
25 x 25 cm - 9^{13/16"} x 9^{13/16"}



PROFILE CONNECTION BARA RT

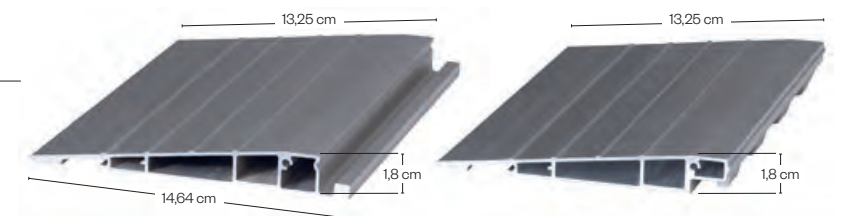
10055925
H 7 cm - 2^{3/4"}



BRUSHED ALUMINIUM RAMP 18 mm

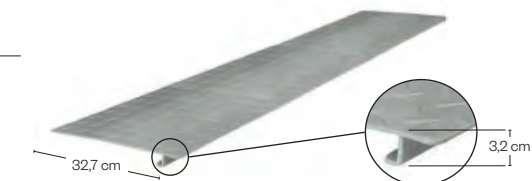
10060271 (female)
14,64 x 100 x 1,8H cm - 5^{3/4"} x 39^{3/8"} x 1^{1/16"}H

10060272 (male)
13,25 x 100 x 1,8H cm - 5^{3/16"} x 39^{3/8"} x 1^{1/16"}H



STEEL RAMP 28 mm

10055929
32,7 x 150 x 3,2H cm - 12^{7/8"} x 69^{1/8"} x 1^{1/4"}H



SELF-LEVELLING MAT

10056002
60 x 120 x 0,8H cm - 23^{5/8"} x 47^{1/4"} x 5/16" H



FIXING TAPE

10055932
120 m

TRIMS 28MM

PROFILE SCHIENE AE ANODISED ALUMINIUM

10056255
2,75 x 250 cm - 1^{1/8}" x 98^{7/16}"



PROFILE BARRA RT COLOURED ALUMINIUM GM

10056257
3,5 x 250 cm - 1^{3/8}" x 98^{7/16}"



PROFILE OUTSIDE CORNER BARRA RT

10055919
25 x 25 cm - 9^{13/16}" x 9^{13/16}"



PROFILE CONNECTION BARRA RT

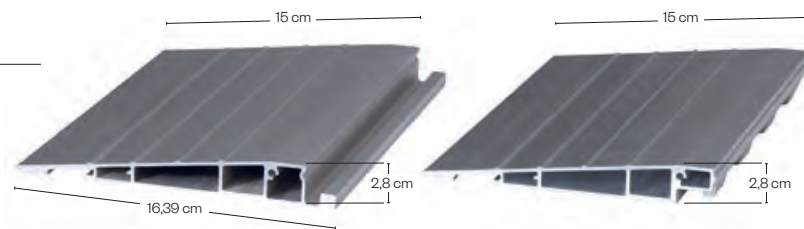
10055922
H 6,5 cm - 2^{3/4}"



BRUSHED ALUMINIUM RAMP 28 mm

10060273 (female)
16,39 x 100 x 2,8H cm - 6^{7/16}" x 39^{3/8}" x 1^{1/8}"H

10060274 (male)
15 x 100 x 2,8H cm - 5^{7/8}" x 39^{3/8}" x 1^{1/8}"H



TECHNICAL CHARACTERISTICS AND WARRANTY

Porcelain Stoneware

PRODUCT TECHNICAL CHARACTERISTICS			
Collection: Pave&go Indoor - Surface: Indoor		Brand: Ceramic tiles	
Size (cm): 60x60		Thickness (mm): 9,5 / 20 mm	

Compliant with standard EN 14411:2016 annex G group Bla - GL
Compliant with standard ISO 13006:2018 annex G group Bla - GL

Technical Features	Testing Method	Meas. unit	Average Typical Values	Established limits				
DIMENSIONAL PROPERTIES AND SURFACE QUALITY								
DIMENSIONS			NOMINAL LENGTH OF EDGE N (cm) 7≤N<15		NOMINAL LENGTH OF EDGE N (cm) N≥15			
Length and width (*)			Complies with the standards	±2% (max 5mm)	±2% (max 5mm)	±2% (max 5mm)		
Length and width (**)								
Not Rectified	ISO 10545-2	(mm) (%)		±0,9 mm	±0,6 %	±2,0 mm		
Rectified			± 0.2% (±1.0 mm)	±0,4 mm	±0,3 %	±1,0 mm		
Thickness								
Not Rectified					Complies with the standards	±0,5 mm	±5 %	±0,5 mm
Rectified						±0,5 mm	±5 %	±0,5 mm
Straightness of sides								
Not Rectified					± 0.2% (±1.5 mm)	±0,75 mm	±0,5 %	±1,5 mm
Rectified						±0,4 mm	±0,3 %	±0,8 mm
Rectangularity								
Not Rectified					± 0.2% (±1.5 mm)	±0,75 mm	±0,5 %	±2,0 mm
Rectified						±0,4 mm	±0,3 %	±1,5 mm
Surface Flatness c.c - e.c. - w.								
Not Rectified			± 0.3% (±1.5 mm)	±0,75 mm	±0,5 %	±2,0 mm		
Rectified				±0,6 mm	±0,4 %	±1,8 mm		
Surface Quality			Complies with the standards	≥95%				

PHYSICAL PROPERTIES				
Water absorption	ISO 10645-3	(%)	≤ 0,5	Eb ≤ 0,5 (Individual maximum value 0,6%)
Water absorption	ASTM C373-14	(%)	≤ 0,5	
Modulus of rupture	ISO 10545-4	(N/mm ²)	≥ 45	R ≥ 35 (Individual minimum value 32 N/mm ²)
Breaking Strength	ISO 10545-4	(N)	9,5 mm: ≥ 2000 20 mm: ≥ 12000	≥ 1300 (Thickness ≥ 7,5 mm) ≥ 700 (Thickness < 7,5 mm)
Breaking Strength	ASTM C648-04	(LBF)	9,5 mm: ≥ 400 20 mm: ≥ 2500	Floor ≥ 250 LBF - Individual minimum value 225 LBF
Resistance to surface abrasion Internal	Interne Verfahren Internal Method		As declared in catalog	
Resistance to surface abrasion Internal	ISO 10545-7		See attached table	Abrasion class and cycles passed
Linear thermal expansion coefficient	ISO 10545-8	(x(10)-6/°C)	≤ 9	Declared value (EN 14411:2016) / Test Method available (ISO 13006:2018)
Thermal shock resistance	ISO 10545-9		Complies with the standards	Declared value (EN 14411:2016) **** / Test Method available (ISO 13006:2018)
Crazing Resistance	ISO 10545-11		Complies with the standards	Pass according to EN ISO 10545-11 (EN 14411:2016) / Required (ISO 13006:2018)
Frost resistance	ISO 10545-12		Complies with the standards	Pass according to EN ISO 10545-12 (EN 14411:2016) / Required (ISO 13006:2018)
Reaction to fire	-	-	Class A1 FL / A1	Class A1 or Class A1 FL (EN 14411:2016)
Colour resistance to light exposure	DIN 51094		Complies with the standards	No sample must show noticeable colour modifications.

TECHNICAL CHARACTERISTICS AND WARRANTY



PRODUCT TECHNICAL CHARACTERISTICS	
Collection: Pave&go Indoor - Surface: Indoor	Brand: Ceramic tiles
Size (cm): 60x60	Thickness (mm): 9,5 / 20 mm

Compliant with standard EN 14411:2016 annex G group Bla - GL
Compliant with standard ISO 13006:2018 annex G group Bla - GL

Technical Features	Testing Method	Meas. unit	Average Typical Values	Established limits
CHEMICAL PROPERTIES				
Resistance to chemicals for household use and swimming pool salts	ISO 10545-13		A	GB Minimum (EN 14411:2016) - GB Minimum (ISO 13006:2018)
Resistance to low concentrations of acids and alkalis	ISO 10545-13		LA	Declared value (EN 14411:2016) - Test Method available (ISO 13006:2018)
Resistance to high concentrations of acids and alkalis	ISO 10545-13		HA	Declared value (EN 14411:2016) - Test Method available (ISO 13006:2018)
Chemical Resistance	ASTM C650-04		Not Affected	Declared value (ANSI A137.1-2012)
Stain resistance	ISO 10545-14		Class 5	Minimum class 3 (EN 14411:2016) - Minimum class 3 (ISO 13006:2018)
Stain resistance	ASTM C1378-04		Not Affected	Declared value (ANSI A137.1-2012)

RESISTANCE TO SURFACE ABRASION - ISO 10545-7	
Dark colors	Class 4 - Visible abrasion after 2100 cycles
Light colors	Class 5 - Visible abrasion after > 12000 cycles

- * The work size shall be chosen, for non-modular tiles, so that the difference between the work size and the nominal size is:
- ** The deviation, in percent, of the average size for each tile (2 or 4 sides) from the work size.
- **** See Table 2 for uses where it is applicable.
- o.o Centre curvature, related to diagonal calculated from the work sizes.
- e.o. Edge curvature, related to the corresponding work sizes.
- w. Warpage, related to diagonal calculated from the work sizes.

PRODUCT TECHNICAL CHARACTERISTICS	
Collection: Pave&go Indoor - Surface: Indoor	Brand: Ceramic tiles
Size (cm): 60x60	Thickness (mm): 20 mm

Static test - Load test on the element resting on 4 pedestals	Standard of reference	Value declared
Concentrated static breaking load (centre of panel)*	UNI EN 12825	≥ 7,0 kN kH
Concentrated static breaking load (centre of side)*		≥ 6,0 kN kH
Concentrated static breaking load (diagonal)*		≥ 6,0 kN kH

The specimen tested consists of a raised floor panel measuring 600x600 mm with thickness 20 mm, in porcelain stoneware. The panel was tested by placing it on four adjustable-height plastic pedestals 100 mm tall.

A similar static load test was performed following an in-house procedure based on some of the recommendations of the 2003 edition of the UNI EN 12825 standard, for indoor raised floors with 5 pedestals. The slab was tested by placing it on 5 plastic pedestals, with one pedestal in the centre of the slab and the others in the 4 corners.

Element permanent deformation test	UNI EN 12825	Test passed
Dynamic load - Hard body impact test	UNI EN 12825	Test failed
Dynamic load - Soft body impact test	UNI EN 12825	Test passed
Vertical load test on pedestal	UNI EN 12825	Test results declared by the pedestal's supplier

TYPE OF TEST	TEST OUTCOME		
Static test - Load test on the element	Standard of reference	Value declared	Classification
Breaking strength **	UNI EN 1339 ANNEX F	Classe del carico di rottura 110 Classe di resistenza a flessione 2	UI1

- * Values refer to the test methods for plain concrete pavings and complementary pieces.
- ** The breaking strain value (expressed in Newtons [N]) is the force required to break the panel in the test points.

TECHNICAL CHARACTERISTICS AND WARRANTY

Pave&Go Technical System 18mm

SIZE AND GENERAL INFORMATION	UNIT	SPECIFICATION
System size ¹	mm	602 x 602
Total System height ²	mm	18,0
Surface		ceramic tile
Tile size ³	mm	598 x 598 x 9,5
Backside of the flooring system		Polyurethane bars and locking system
Storage		Indoor storage is recommended
Laying temperature		-5 to + 35°C ⁴
UV resistance		Requirements fulfilled: no cracks, no blistering ⁵
Thermal Shock resistance According to EN 10545-9:2000		PASS
INFORMATION FOR INSTALLATION		
Installation methods		cross-bond, half-offset or random structure
Possible staggered installation (multiples of)	mm	50
Usage		indoor areas
Floor heating		suitable ⁶
DATA FOR THE LAID ELEMENTS ⁷		
Weight approx.	kg / m ²	26
Average width of joint	mm	3
Fire behaviour according to DIN EN 13501(2010-01)		Bfl-s1
Resistance of the joints to liquids		Very good ⁸
Heat transfer resistance R	m ² K/W	0.124 ⁹
Anti-Slip-Class, abrasive-strength		According to the series - Technical Sheet
LOAD VALUES / TYPES OF USE ON A LEVELLED SURFACE		
Payload: Pallet truck with polyurethane or rubber wheels	kg	600
Point load at 2,5 x 2,5 cm	kg	275 ¹⁰
Possible applications: office space, shop-in-shop and pop-up systems, low loaded salesrooms.		
LOAD VALUES ON SUBFLOORS ¹¹		
Payload: Pallet truck with polyurethane or rubber wheels	kg	450
Point load at 2,5 x 2,5 cm	kg	200 ¹²
Possible applications: exhibition stands, private rooms, office space, low loaded salesrooms.		

- ¹ Tolerance element size: -0,0% / +0,07% of the nominal dimension.
- ² Thickness tolerance: ±5% of the nominal dimension.
- ³ See tile's tolerance from pag. 1, Ceramic Tile Technical Sheet.
- ⁴ For an easier installation, a previous storage of the elements in a closed room for 2 days is recommended; the more suitable room temperature for the storage must be kept above 15° C/59° F).
- ⁵ Color changes can still occur due to UV exposure or chemicals.
- ⁶ For floor heating, an object-related examination / calculation must be carried out by the specialist planner heating or heating engineer. Thermal resistance without heat transfer resistance R_s.
- ⁷ Observe the Information on laying floor system Pave & Go.
- ⁸ Polyurethane as material for the joints does not absorb any liquids. Stains can be removed. Organic liquids, especially solvents, can cause changes in colour when left too long on the joints. Please refer to Pave & Go the cleaning instructions for flooring system.
- ⁹ For floor heating, an object-related examination / calculation must be carried out by the specialist planner heating or heating engineer. Thermal resistance without heat transfer resistance R_s.
- ¹⁰ Tested with tiles with a thickness of 10,0 mm and an average bending resistance of 50N/mm².
- ¹¹ In accordance with DIN 18202 increased requirements - Table 3 - line 4.
- ¹² Tested with tiles with a thickness of 10,0 mm and an average bending resistance of 50N/mm².



Pave&Go Technical System 28mm

SIZE AND GENERAL INFORMATION	UNIT	SPECIFICATION
System size ¹	mm	602 x 602
Total System height ²	mm	28,0
Surface		ceramic tile
Tile size ³	mm	598 x 598 x 20,0
Backside of the flooring system		Polyurethane bars and locking system
Storage		Indoor storage is recommended
Laying temperature		-5 to + 35°C ⁴
Measurement of the walking noise in the test facility according to EN 16205		L _n walk, A = 99 dB(A) - (98,7 dB(A) ± 0,2 dB(A)).
Test of the improvement of impact sound insulation in the ceiling test facility according to EN ISO 10140		ΔL _w (C, Δ) = 15 (-10) dB ΔL _w (C _i , Δ) = 22 (-11) dB ⁵
UV resistance		Requirements fulfilled: no cracks, no blistering ⁶
Thermal Shock resistance According to EN 10545-9:2000		PASS
INFORMATION FOR INSTALLATION		
Installation methods		cross-bond, half-offset or random structure
Possible staggered installation (multiples of)	mm	50
Usage		indoor areas
Floor heating		suitable ⁷
DATA FOR THE LAID ELEMENTS ⁸		
Weight approx.	kg / m ²	46
Average width of joint	mm	4
Fire behaviour according to DIN EN 13501(2010-01)		Bfl-s1
Resistance of the joints to liquids		Very good ⁹
Heat transfer resistance R	m ² K/W	0.133 ¹⁰
Anti-Slip-Class, abrasive-strength		According to the series - Technical Sheet
LOAD VALUES ON SUBFLOORS ¹¹		
Payload: Pallet truck with polyurethane or rubber wheels	kg	2000
Point load at 2,5 x 2,5 cm	kg	800 ¹²
Possible applications: Showrooms commercial vehicles, retail space - shop fitting, public buildings. Forklift truck and electric lift truck up to max. 2800 kg. ³		

- ¹ Tolerance element size: -0,0% / +0,07% of the nominal dimension.
- ² Thickness tolerance: ±5% of the nominal dimension.
- ³ See tile's tolerance from pag. 1, Ceramic Tile Technical Sheet.
- ⁴ For an easier installation, a previous storage of the elements in a closed room for 2 days is recommended; the more suitable room temperature for the storage must be kept above 15° C/59° F).
- ⁵ Value ΔL_w(C_i, Δ) = 22 (-11) dB only applies to installation with AR-compensation-mat.
- ⁶ Color changes can still occur due to UV exposure or chemicals.
- ⁷ For floor heating, an object-related examination / calculation must be carried out by the specialist planner heating or heating engineer. Thermal resistance without heat transfer resistance R_s.
- ⁸ Observe the Information on laying floor system Pave & Go.
- ⁹ Polyurethane as material for the joints does not absorb any liquids. Stains can be removed. Organic liquids, especially solvents, can cause changes in colour when left too long on the joints. Please refer to Pave & Go the cleaning instructions for flooring system.
- ¹⁰ For floor heating, an object-related examination / calculation must be carried out by the specialist planner heating or heating engineer. Thermal resistance without heat transfer resistance R_s.
- ¹¹ In accordance with DIN 18202 increased requirements - Table 3 - line 4.
- ¹² Ibidem.

CARE AND CLEANING CONDITIONS

ROUTINE CLEANING INSTRUCTIONS

Emilceramica products are easy to care for, confirming our commitment to the environment. However, cleaning procedures and frequency will always depend on the context in which the tiles are used.

For effective care, we recommend the following:

1. Do not leave dirt on the surface for too long.
2. Wash surfaces regularly with neutral or degreasing detergents diluted in hot water, following the instructions on the pack.
3. Rinse with clean water.

EXTRAORDINARY CLEANING INSTRUCTIONS

Extraordinary cleaning procedures are needed if the floor becomes stained or dirty with specific substances due to accidents. In this case, professional, alkaline detergents, specifically developed for the type of dirt to be removed (see table of examples), are required.

For effective extraordinary cleaning, we recommend the following:

1. Wash with water to remove superficial dirt.
2. Apply the alkaline product diluted in a solution of about 3% to the surface. The detergent concentration can be gradually increased to deal with difficult cases where coatings or unusually tough stains have to be removed.
3. Wait 7/10 minutes. For stubborn stains, the abrasive effect can be increased by using a dry powder soap, sprinkling it over the detergent at the end of the waiting time.

CARE AND CLEANING CONDITIONS

TYPE OF DIRT	RECOMMENDED CLEANER					
	Solvent		Acid detergent		Alkaline detergent	
	FILA	FABER	FILA	FABER	FILA	FABER
Beer, wine					PS - 87 PRO	Stain Remover Powder
Coffee					PS - 87 PRO	Stain Remover Powder
Tar	Solv	Solvent Stripper				
Rubber	Solv	Solvent Stripper				
Cement			Deterdek Pro	Cement Remover		
Candle wax	Solv	Solvent Stripper				
Coca cola					PS - 87 PRO	Stain Remover Powder
Lime bloom			Deterdek Pro	Cement Remover		
Plaster			Deterdek Pro	Cement Remover		
Animal fats					PS-87 PRO	Deep Degreaser
Vegetable fats					PS-87 PRO	Deep Degreaser
Ice-cream					PS-87 PRO	Deep Degreaser
Inks					PS - 87 PRO SR 95	Deep Degreaser
Marker pens					PS-87 PRO	Deep Degreaser
Ketchup					PS - 87 PRO	Deep Degreaser
Mayonnaise					PS - 87 PRO	Deep Degreaser
Jams					PS - 87 PRO	Deep Degreaser
Engine / silicone oils	Solv	Oil & Grease Remover			PS - 87 PRO	Deep Degreaser
Flaxseed oil	Solv	Oil & Grease Remover				
Tyre					PS - 87 PRO	Deep Degreaser
Metal residues			Deterdek Pro	Tile Cleaner		
Resins or enamels			No Paint Star	Epoxy Cleaner		
Lipstick					PS - 87 PRO	Deep Degreaser
Rust			Deterdek Pro	Margel Plus / Oxidant		
Grouting material			Deterdek Pro	Margel Plus / Oxidant		
Emulsion paints			Deterdek Pro	Tile Cleaner		
Silicone	Solv	Epoxy Cleaner				
Chewing-gum					PS - 87 PRO	Deep Degreaser

IMPORTANT!

Take great care when using acids or other chemical products; comply strictly with the instructions provided by the producer on the pack. Always start using products diluted 1:5 in water and gradually increase the concentration if the stain is not removed.

PAVE AND GO

paveandgo.com